

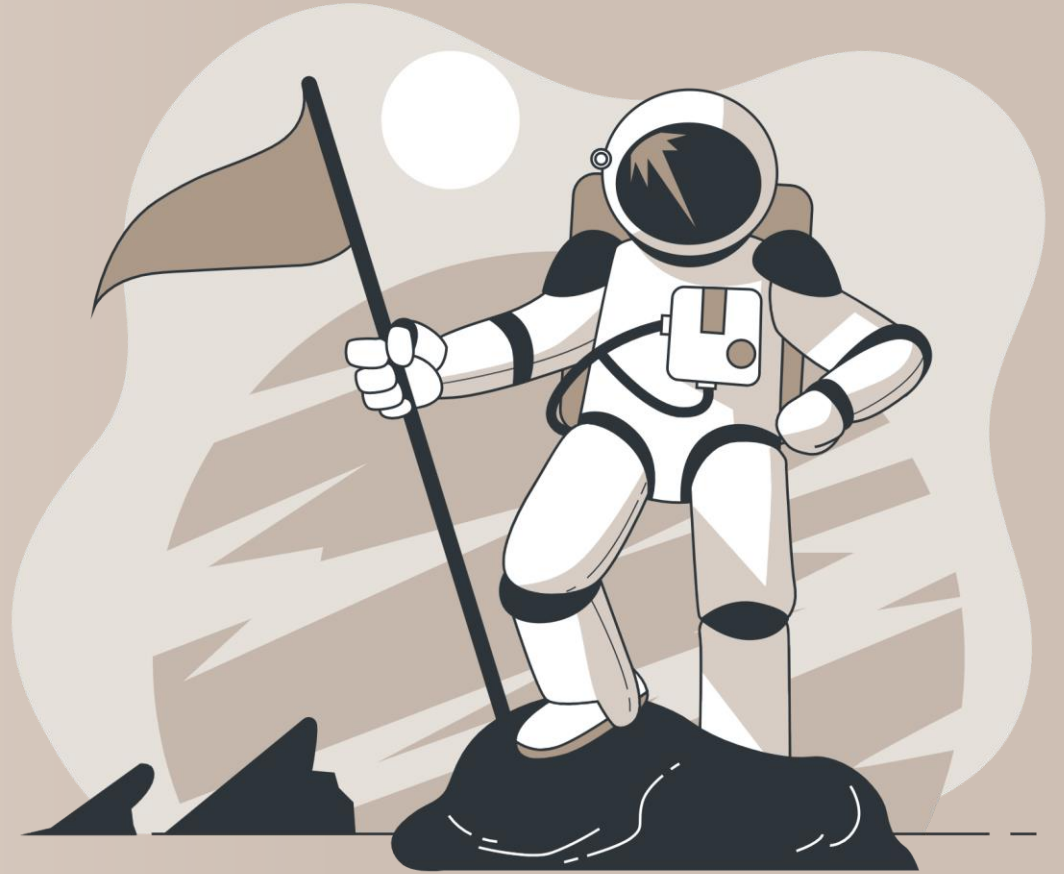
Webinar InBetween 5.0 New Features



05 April 2023

Michael Christoffel

What is so special about **InBetween 5.0?**



What is so special about InBetween 5.0?

Clear service-oriented architecture:

All functionalities are available for all clients and all publishing processes.

InBetween in the Cloud:

InBetween 5.0 has been optimized for the use within a cloud environment.

Team-oriented publishing:

Contemporary business processes rely on different persons working together.

Smart and easy:

InBetween software becomes more and more intuitive to use.

The fastest InBetween of all times:

Generation times become faster and faster.

Highlights of InBetween 4.8



Highlights of InBetween 4.8

Flexible arrangement and file import of products and content elements in Publication Wizard



Several users can work simultaneously within the same publication

Enhanced border styles

InDesign tables of contents

New options for the generation of office documents (Word, Excel, Powerpoint)

Publication Wizard

localhost:8080/InBetween/#/PublicationWizard/builder-elementlist

BCS: Jia Publisher PublisherA PublicationWizard GoToMeet.Me Google

Builder

Help

*Webinar

Seitenplanung EN_GB 100%

AZ 1-9 1-9 (A-Z) Gruppierung Sortierung Preis

chapter_start

Food

1

groceries flow

Fusilli

Fine sugar

Vanilla sugar

Miracle Whip

Lasagne

soft cake

Vital crispbread

Camomile tea

Les sauces Hollandaise

Oat drink

Truffle Pralinen

Tomato ketchup

2

Masterseiten Anzahl 1

clothing g...

cover cha...

outdoor o...

clothing g...

groceries ...

groceries ...

groceries ...

Products

Eigenschaften des Bereichs

Seitenbereich FAR.1

Alternatives Template < Rules>

Artikel	Preis
Fusilli	0,29
Fine sugar	0,85
Vanilla sugar	0,99
Miracle Whip	1,11
Lasagne	1,12
soft cake	1,19
Vital crispbread	1,28
Camomile tea	1,29
Les sauces Hollandaise	1,29
Oat drink	1,34
Truffle Pralinen	1,39
Tomato ketchup	1,46
Herbal tea	1,72
Luflee chocolate	1,81
Mousse au Chocolat	1,92
Detergent	1,99

Highlights of InBetween 4.8

Flexible arrangement and loading elements from file in Publication Wizard

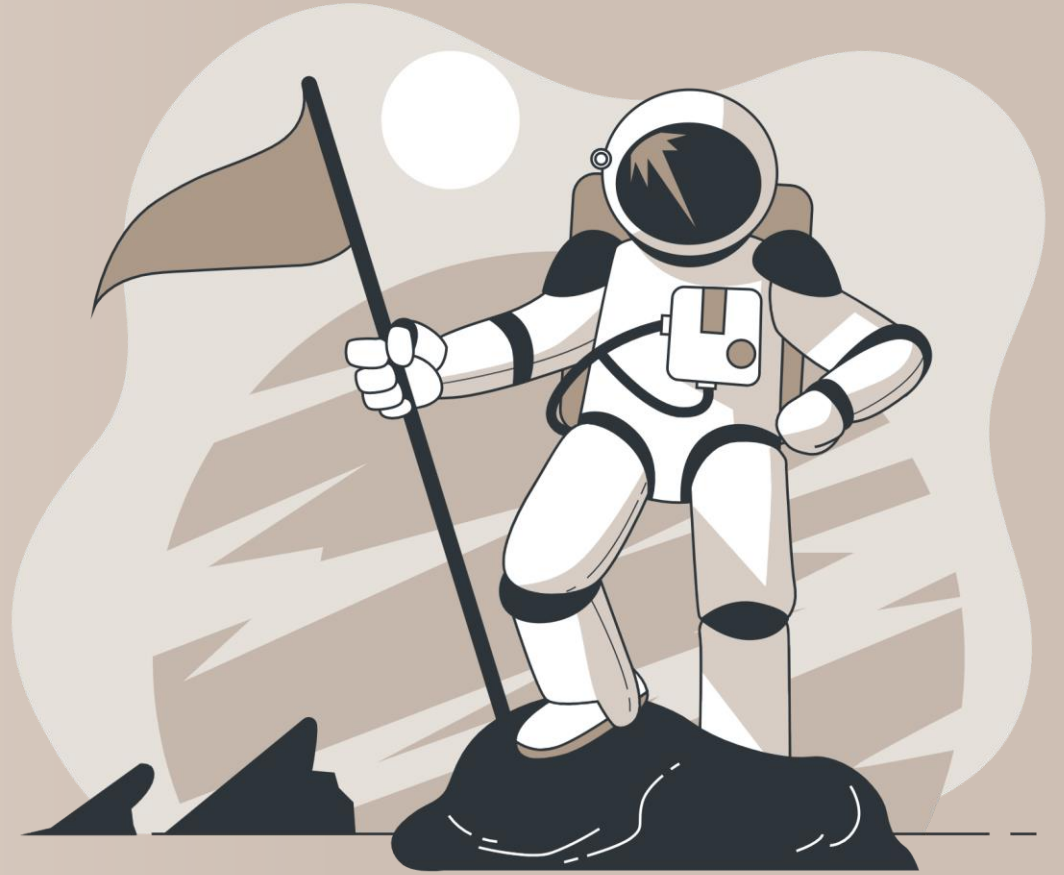
Several users can work simultaneously within the same publication

Enhanced border styles

InDesign tables of contents

New options for the generation of office documents (Word, Excel, Powerpoint)

New features in **InBetween 5.0**



5.789 Tickets resolved in InBetween 5.0/5.0 SR1

Planning and supervision
of publishing processes

The new InBetween
Publication Planner





Planning and supervision of publishing processes

Workflow-based overview on all currently active publishing processes

Up-to-date information regarding project states, timelines, responsibilities

Monitoring the progress in all publications including preview of the current state

Dashboard showing a summarized view

Creation of new publications, assigning timelines, sections, responsibilities

DateiBearbeitenAnsichtChronikLesezeichenExtrasHilfe

Publication Planner

localhost:8080/InBetween/#/PublicationPlanner/Table-With-Pie

BCS: IB Jia IB Publisher IB PublisherA IB PublicationWizard IB Publication Planner Atlassian Google

Planner

DASHBOARD

ProjectWebinar

Master Publication (Optional)Publication

Create New

Status

In Planning38%

In Work62%

Finished0%

Stage

Marketing76%

Media Design12%

Distribution12%

	TITLE	PAGES	DUE ON	LANGUAGE	STATUS	PROGRESS	STAGE	NEXT STAGE	RESPONSIBLE
	Catalog 2021	11	DD.MM.YYYY		Distributed	100%	Distribution		Adam
	Catalog 2022	10	DD.MM.YYYY		Distributed	100%	Distribution		Fiona
	Catalog 2023	12	DD.MM.YYYY		In Work	21%	Marketing	Media Design	Clara
	Fair Catalog	10	DD.MM.YYYY		In Planning	16%	Marketing	Media Design	James
	Main Catalog	10	DD.MM.YYYY		In Work	16%	Marketing	Media Design	Doris
	New Products	10	DD.MM.YYYY		In Work	16%	Marketing	Media Design	Bianca
	sample output	8	DD.MM.YYYY		Available for Finishing	33%	Media Design	Distribution	Clara
	Spring Catalog	8	DD.MM.YYYY		In Finishing	33%	Media Design	Distribution	Adam
	Summer Fashion	10	DD.MM.YYYY		In Work	16%	Marketing	Media Design	Hannah
	Summer Sport Extra	10	DD.MM.YYYY		In Planning	16%	Marketing	Media Design	Ben

Search

Rows per page : 18

1 - 11 of 11

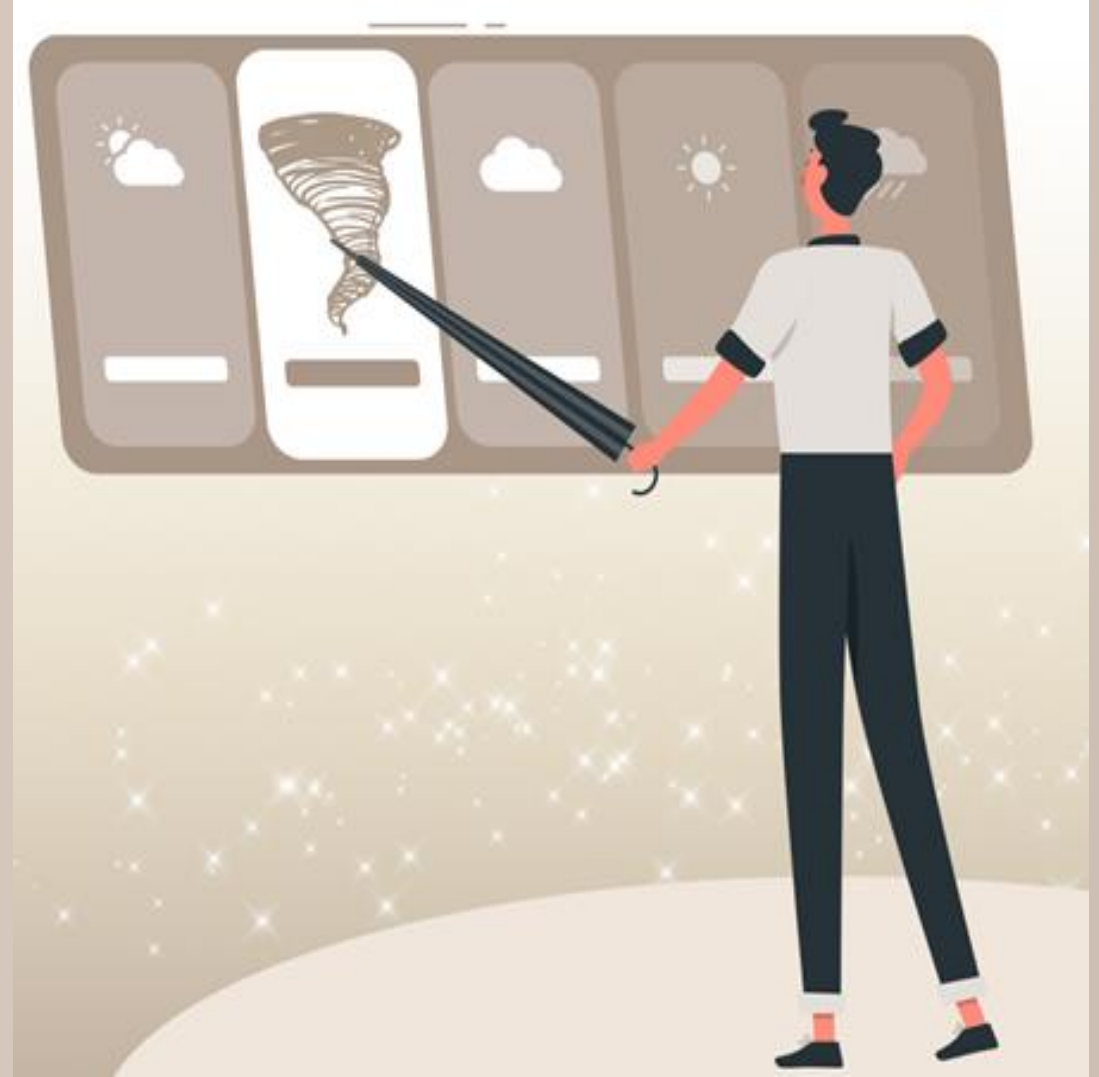
<<

<

>

>>

Hurricane mode in the **InBetween Cloud**



Hurricane Mode in the InBetween Cloud

InBetween will continue to be available on Premise and in the InBetween Cloud

Preparation of a second resource allocation with a large computing power in Amazon AWS

InBetween changes to „Hurricane“ mode during computationally intensive generation

As soon as the additional resources are no more needed, InBetween changes to regular mode

How about generating datasheets with 120 cores?

User interfaces with
free layout
(Custom UI)



User interfaces with free layout

In addition to the existing user interfaces

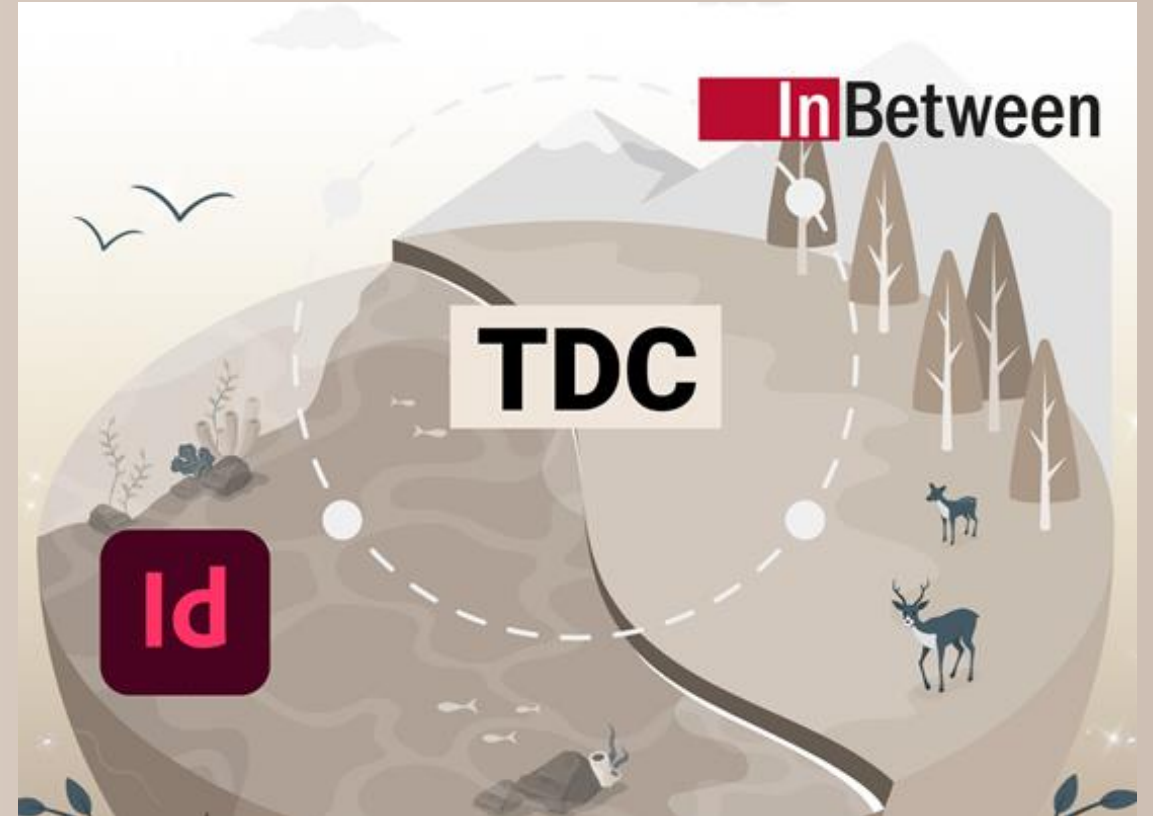
Allow the realization of a user behavior optimized for a specific area of application

Web interface tailored to a customer scenario

All functions to control the publishing processes are available using a uniform interface

Implementation effort is reduced to the development of the web frontend

New InDesign-Renderer



New InDesign-Renderer

InBetween 4.x placed the frames of an InDesign documents one by one, page by page

InBetween 5.0 passes a pre-calculated structure of the entire documents (TDC generation)

The InDesign plugin constructs entire page sequences in one step

Perceptible increase of generation speed

Suitable for InDesign Server und InDesign desktop application

Extended content of **packed InDesign documents**



Extended content of packed InDesign documents

InBetween allows the creation of packed InDesign documents in the form of a ZIP archive

The contents of this package can be chosen freely, e.g., images and fonts

Even PDF exports of the generated InDesign documents can be added to the package

Metadata in PDF documents



Metadata in PDF documents

InBetween is able to add metadata to the generated PDF documents

Pre-defined metadata fields can be filled, and custom elements can be created

Even variables and data queries can be assigned to metadata elements

Dokumenteigenschaften

×

Titel

Neuheitenbroschüre 2023

...

Author

InBetween Design GmbH

...

Thema / Beschreibung

...

Custom Properties ⓘ

Name

Preise_gültig_ab

Hinzufügen

Wert

01.04.2023

...

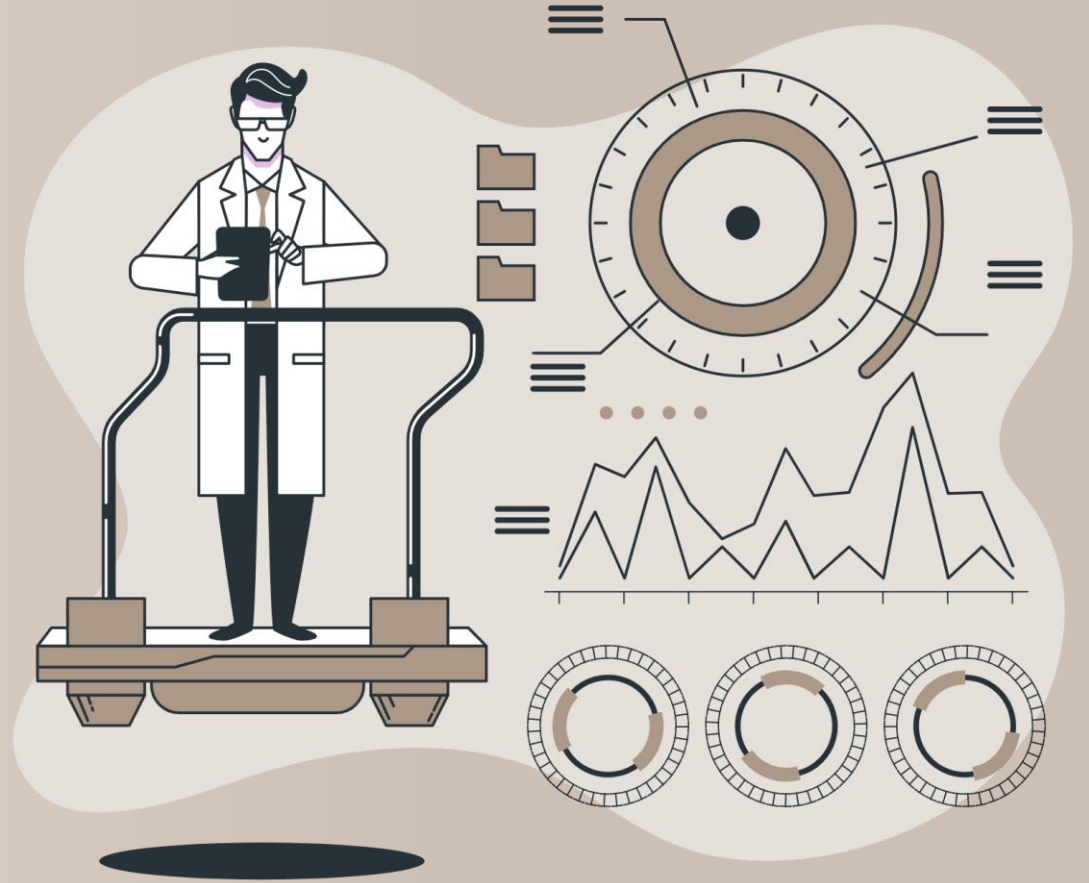
Löschen

Name	Wert
Preise gültig ab	01.04.2023

OK

Abbruch

New Data query dialog





New data query dialog

The data query dialog allows the creation of data queries without any programming

The user behavior has been simplified significantly

Fewer mouse clicks and shorter mouse movements

The effort for the creation of data queries has been reduced by 70%

Textrahmen bearbeiten

vor-/nachgestellter Text

Vorschau

Datenwert

Hyperlink

Positionen

Querverweis

Rahmen

Zellenvorgabewert

Rahmen (erweitert)

Stile

Text

Satzvariablen

Text (erweitert)

Master-Textrahmen

☐ Wert

☒ Datenabfrage

☐ Variable

☐ Formatschalter

☐ Satzvariable

☐ Seitenvariable

☐ DokumentenvARIABLE

DATA LIBRARY

DATA QUERY

product:attribute-list:attribute?node-list{*}:chapter{*}:subchapter{*}:product[{productId}=\$CURRENT_LINK\$]:attribute-list{*}:attribute[{LANGUAGE\$}]#

Typ der Funktion: Nach Text sortieren

AZ

node-list:chapter:subchapter:product:attribute-list:attribute[{LANGUAGE\$}]#

Datenquelle

Stack:

Stack Elements:

Sprache:

DSR.1 : xml : Products

Products

C1S1P2

DE

Search

Datenbaum

Attribut

catalog

node-list

chapter

attribute-list

price-list

subchapter

attribute-list

overview

price-list

product

attribute-list

attribute

price-list

variant

translation-list

artNumber

type

productId

layout

image

Ergebnis:

Auto Results ☒

Olympas

Next →

Error Details

OK

Abbruch

Arithmetical Operations





Arithmetical operations

In addition to the various operations for the manipulation of text, InBetween now also allows the manipulation of numbers.

Basic arithmetic operations and rounding

Data queries, constant values and variables can be combined in mathematical expressions

Currency conversions, value added tax, unit conversion, customer-individual prices,...

X

```
Mul(node-list:chapter:subchapter:product:attribute-list:attribute;$price_discount$;"")
```

Mul

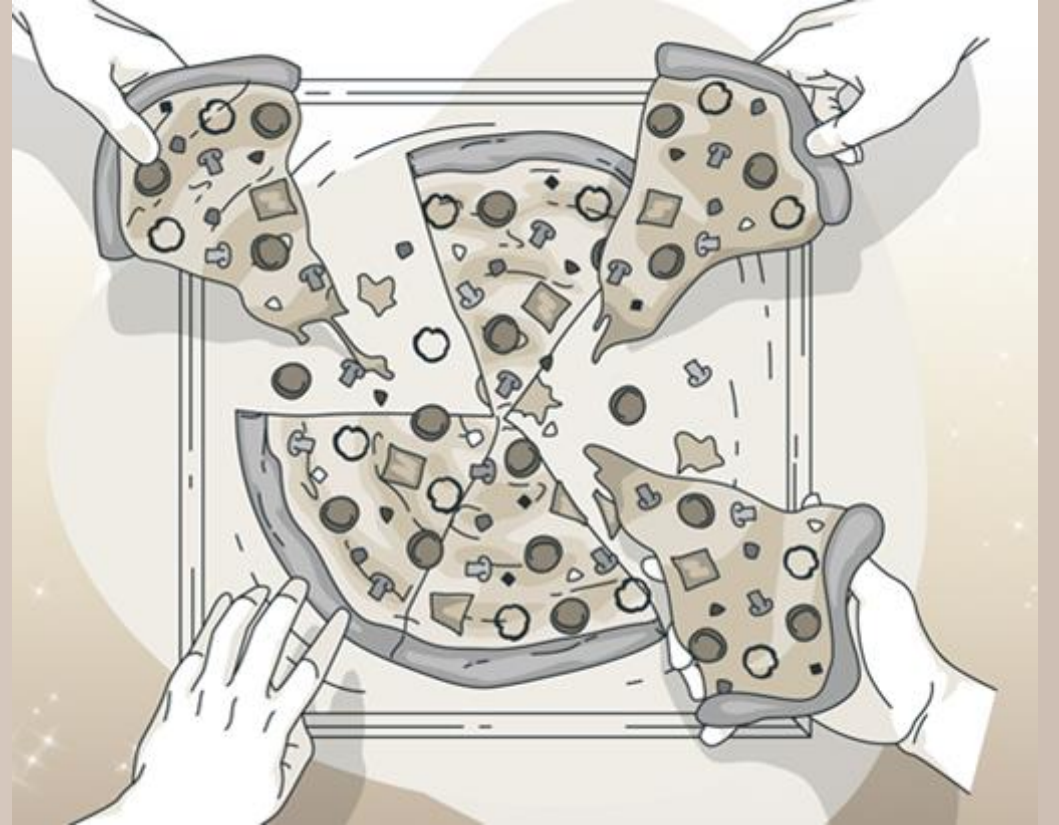
Dezimaltrennzeichen ☐ Punkt "." ☒ Komma ","

Wert Variablen

General	Name	Code	Wert
product specific	tablschema	tablschema	
background	Bildervarianten	Bildervarianten	
Covertext	subchapterid_outdoor_o...	subchapterid_outdoor_o...	node-list:chapter:...
	subchapterid_overview	subchapterid_overview	node-list:chapter:...
	price_discount	price_discount	0,925

Abbruch

Enhanced User administration



Enhanced user administration

InBetween allows the fine-granular assignment of system and project rights

InBetween User groups can be synchronized with groups contained in an LDAP service

Multiple user accounts can be created or deactivates at once

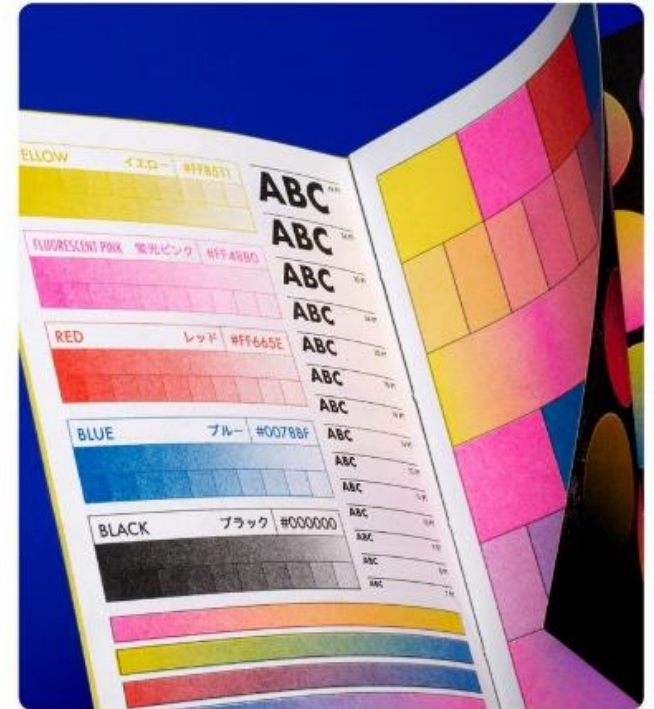
Current InDesign Version



© 1999-2022 Adobe. All rights reserved.

Grafik von Julia Schimautz. Weitere Details und rechtliche Hinweise finden Sie im Fenster „Über InDesign“.

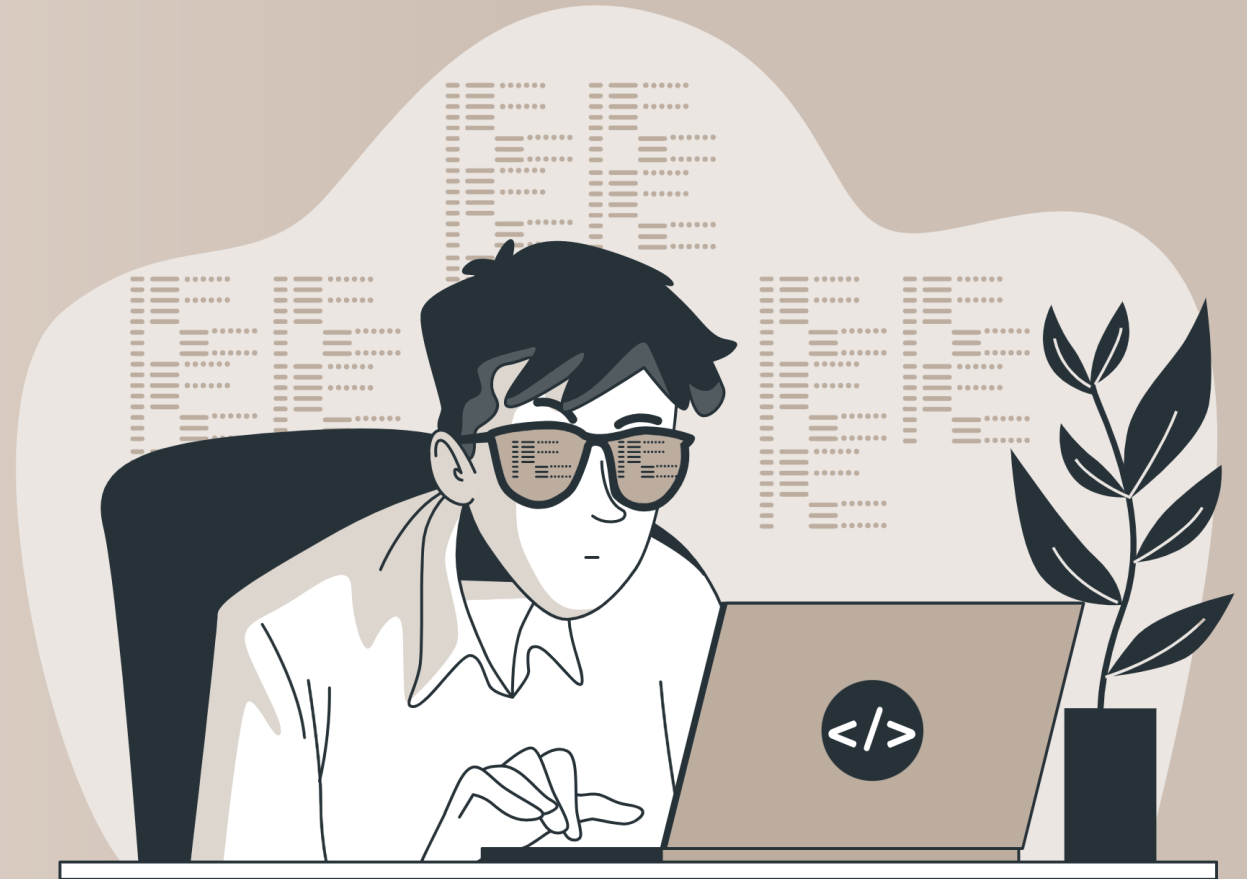
Bedienfelder werden aufgerufen...



Current InDesign Version

InBetween supports InDesign 2023 Server and desktop application

Outlook on planned development activities



Planned development activities

New web-based Project Editor

Improved, faster Publication Wizard

Automatic creation of data queries

More parallelly running threads inside the same generation job

Automated generation of diagrams

Questions



Webinar InBetween 5.0 New Features



05 April 2023

Michael Christoffel